



# TINTING SYSTEM





# SATISFIED CUSTOMERS THANKS TO COLOUR VARIETY

---

## COAT AND PROTECT WOOD – IN EVERY SHADE OF COLOUR

Osmo specialises in the perfect interplay between wood and coating systems. Our natural-oil-based coating systems provide optimum protection and care for wood surfaces and, at the same time, ensure an attractive appearance. This is what makes our high-quality brand products so popular with contractors and end customers alike.

Now Osmo makes it possible for you to offer your customers even more – more colour variety, more flexibility and more satisfaction – with the introduction of a new service that produces individual colours mixed to order:

### **Osmo Tinting System.**





**TINTING SYSTEM**  
**IN SHOPS,  
 FROM  
 PROFES-  
 SIONALS**

# THE PROFESSIONAL SERVICE FOR EVERYONE

The Osmo Tinting System provides unlimited colour variety for Osmo coating systems: RAL and NCS colours can be mixed automatically to the exact colour shade and are therefore available directly. In addition, all Osmo standard colours for the interior and exterior can be mixed quickly upon request. This means you are always able to deliver and fulfil all customer requirements.

**Learn about the Osmo Tinting System in detail and inspire your customers with even more individuality.**



# COLOUR VARIETY AS INDIVIDUAL SERVICE

## NEW BASE PRODUCTS FOR PERFECTLY MATCHED COLOUR SHADES

With the Osmo Tinting System, all RAL and NCS colours can be mixed as well as all standard Osmo product colours. We have developed new base products that cover the entire Osmo range. Only for Polyx®-Oil Original and UV-Protection-Oil, you tint the original product.

The colour pastes used in the Tinting System are highly concentrated pigment pastes. They have been especially developed for use with our system and are perfectly formulated for it. This allows us to guarantee reliably the highest quality for all mixed colours.

**Individual colour shades for end users and professionals.**

## STANDARD COLOURS: MIXING “CROSSOVER” COLOURS

With the Tinting System, you can mix all standard product colours from the Osmo product range for your customers. You can even use exterior product colours to mix a “crossover” colour for the interior and vice versa. The colours of the two coating systems only need to be either both opaque or both transparent.

## ALWAYS AVAILABLE

Since all Osmo standard colours of the respective products can be mixed at the Osmo Tinting Station, you have a great advantage: If you do not have a certain colour in stock, you can simply mix it by yourself at short notice. This means you always have 100% product availability.



## Tinting System





# PLENTY OF BENEFITS – READY TO START MIXING?

## OFFER YOUR CUSTOMERS SIMPLY MORE

No matter whether on-trend colours, individual colours of choice or perfectly coordinated colour schemes for the interior and exterior: the Osmo Tinting System opens up completely new services for your customers.

## THE BENEFITS FOR YOUR CUSTOMER:

- > Significant addition to the respective colour range
- > Consistent product availability
- > Individuality in project consultation
- > Quick availability of bespoke colours
- > Simple colour selection by using colour fans
- > Guarantees the highest product quality for every mixture
- > Use “crossover” colours from the interior range for the exterior, and vice versa

## BENEFIT FROM A SYSTEM, CUSTOMER LOYALTY INCLUDED

Use the Osmo Tinting System to fulfil your customers' wishes even more individually. This ensures greater satisfaction, higher customer loyalty and new opportunities for sales.

## THE BENEFITS FOR YOU:

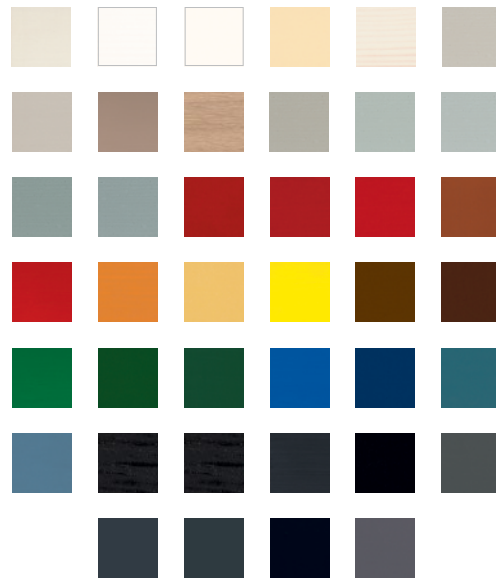
- > Perfect tool for customer loyalty
- > Colour variety for your customers
- > On-trend colours can be offered at any time
- > High probability of repeat orders
- > Quick availability of all Osmo standard colours
- > Efficient use of storage capacities

Indicate your service with a sticker on the can of mixed-to-order wood coating.



# OPAQUE COLOURS

With opaque coatings, strong colour effects are achieved and distinct contrasts are created between differently coloured surfaces.



**TINTING SYSTEM**  
IN SHOPS,  
FROM  
PROFES-  
SIONALS

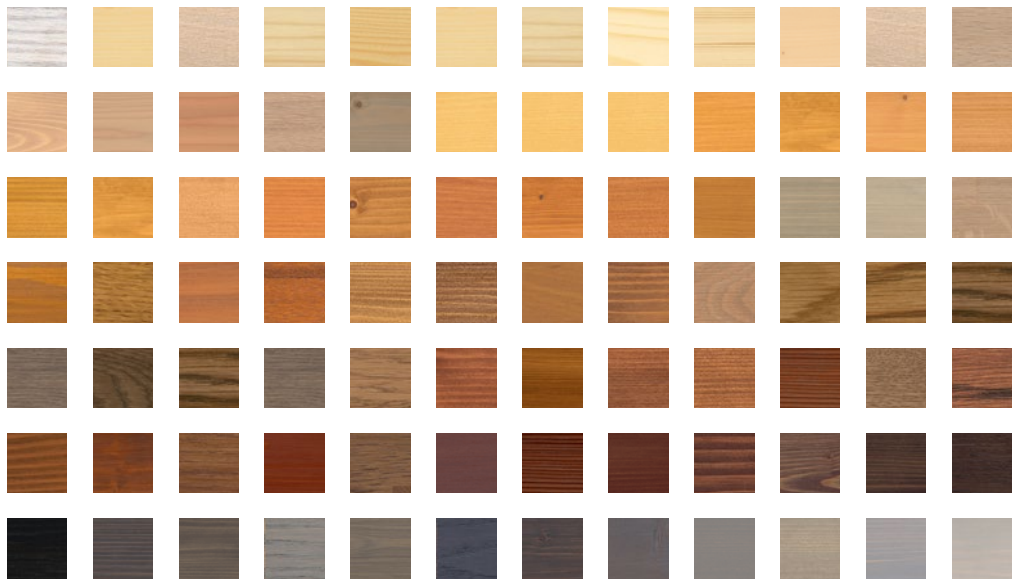


## DOES YOUR CUSTOMER WANT AN OSMO STANDARD COLOUR?

Mix all Osmo standard colours with the Tinting System. Exterior colours can also be used for the interior products, and vice versa, so long as they are either both opaque or both transparent.

# TRANSPARENT COLOURS

After applying a transparent stain, the wood texture stays visible as wood grain, while the colour tone is changed by the pigments in the coating.



## HOW ARE OPAQUE OR TRANSPARENT COLOURS MIXED?

One example: Your customer has used Osmo Decking-Oil Transparent Grey on his timber decking. Now he would like to have the same colour for the wooden flooring and wants to use Osmo Polyx®-Oil Original. As both coating systems are transparent, you can simply mix Polyx®-Oil Original with the help of the Osmo Tinting System in the grey colour of Osmo Decking-Oil.

# PROFESSIONAL MIXING – DIRECTLY ON SITE

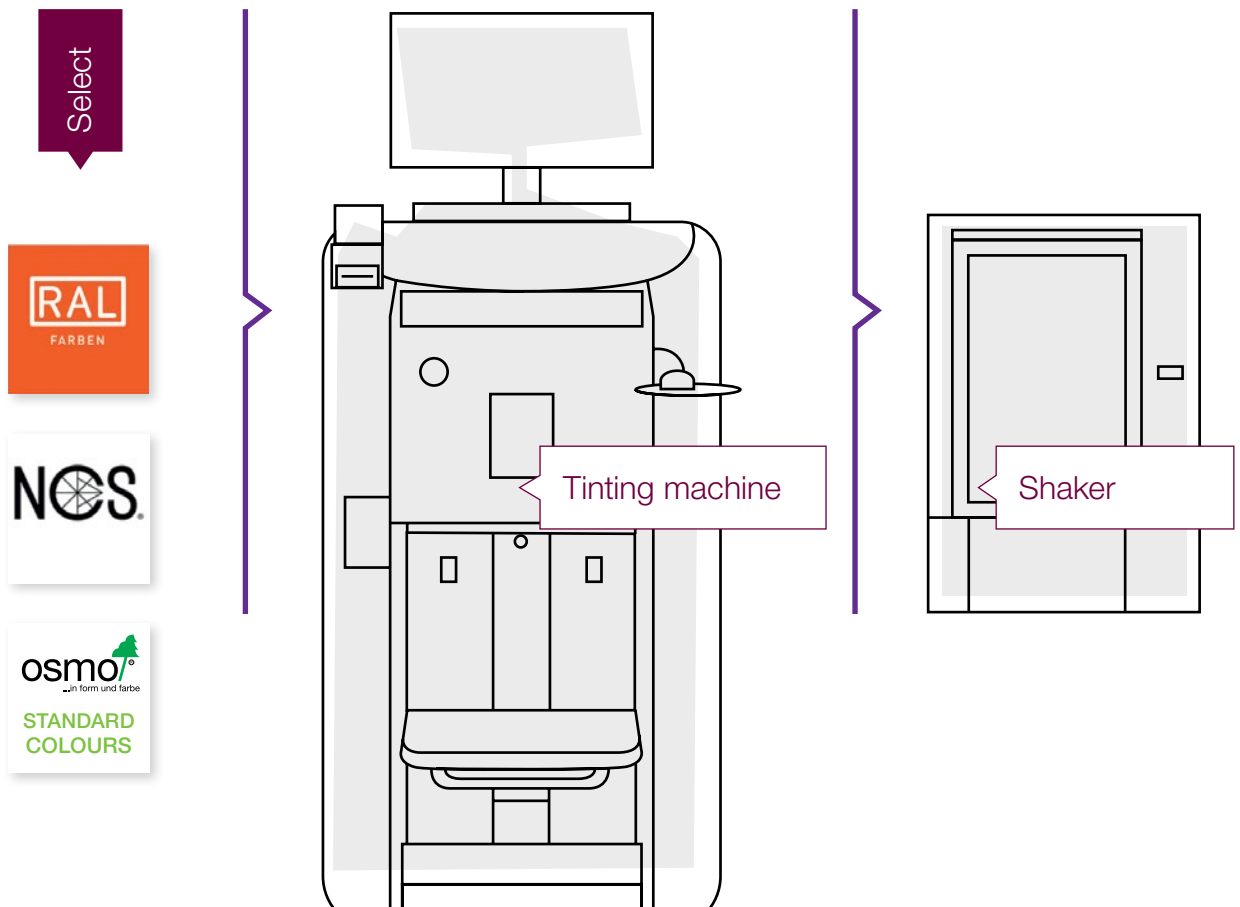
## THE TINTING STATION

The compact, powerful and easy-to-use machine HA 180 from Fast & Fluid Management BV uses a ZeroPurge™ piston pump with AutoDrive™ functions for a fully customised colour mixture. It works quickly, precisely and reliably, and it is very easy to service and maintain: for example, the automatic cleaning function saves you from having to flush the piston pump manually. In addition to the Tinting Station, a shaker is required to produce a perfectly ready-to-use and take-away coating for your customers.

## RELIABLE AND SUSTAINABLE

- > A total of 14 highly concentrated pigment pastes for maximum colour variety
- > Automatic, routine stirring prevents the pastes from drying out
- > 100% of the pastes are used for mixing; no residues are deposited in the machine
- > 100% waste-free mixing process for a sustainable coating production
- > No cleaning necessary before or after mixing

## Tinting System





# REACH YOUR GOALS – WITH HIGHEST QUALITY

## RELIABILITY INSIDE AND OUT

All Osmo natural-oil-based coatings are suitable for use with the Osmo Tinting System – both for interior and exterior use. It is 100% guaranteed that there is no difference in quality to the original product.

Newly developed base products are used to mix the desired colour for the entire range.

### Exception:

No base products are required for Polyx®-Oil Original and UV-Protection-Oil; the original product is used for these products.

## HOW IT WORKS

- ① Start with a colour shade and then select the desired Osmo product.
- ② Start with an Osmo product and then see which colour shades are possible.

### What you need:

- > RAL / NCS colour fan
- > Standard colours from Osmo

### Example:

You can select a standard product colour of Osmo UV-Protection-Oil and mix Osmo Polyx®-Oil Original in this colour.



# THE PERFECT MACHINE FOR EFFICIENT MIXING

## PERFECT RESULTS

For the precise and efficient mixing of colour shades, Osmo recommends the Tinting System in combination with the machine HA 180 from Fast & Fluid. This machine is set up specifically for the requirements of Osmo coating systems and thus it guarantees excellent results. With the HA 180 from Fast & Fluid, Osmo focuses on quality, efficiency and sustainability.



## BENEFITS

- > **Reliability:** The HA 180 offers consistency in performance that ensures consistent quality of colour mixtures.
- > **User-friendliness:** With a user-friendly interface, the machine enables simple and intuitive operation, which speeds up the mixing process.
- > **Speed:** The high efficiency of the HA 180 allows colours to be mixed quickly without any long waiting times.
- > **Easy maintenance:** The machine is designed to be easy-to-maintain, resulting in less downtime and a longer service life.
- > **Sustainability:** Through the economical use of materials and energy, the HA 180 contributes to sustainability and thus supports Osmo's commitment to environmental protection.





# ELEMENTS INSPIRED BY NATURE

BRAND  
NEW AND  
POPULAR

## THE COLOUR COLLECTION FOR OSMO COUNTRY COLOUR

### COLOUR COLLECTION: ELEMENTS INSPIRED BY NATURE

The popular Osmo Country Colour is now available in the attractive new colour collection “Elements Inspired by Nature”. The soft pastel colours allow your customers to create individual wood designs with a natural charm. As this exclusively developed colour collection is mixed solely from the Country Colour product line, your customers can rely on the high quality of this product for use on exterior wood.

### OSMO COUNTRY COLOUR IN AN EXCLUSIVE VARIETY


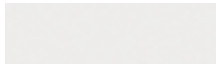













Earth, Fire, Water, Air – these are the elements that served as inspiration for the 120 trendy colours in the “Elements Inspired by Nature” collection. Osmo Country Colour is ideally suited for any exterior wood and combines a wide colour variety with unsurpassed durability in all weather conditions. This opaque, semi-matt wood finish is based on natural oils. The wood colour and grain are covered – but the wood texture remains noticeable.

## Tinting System



120 NEW  
COLOURS

### A SELECTION OF “ELEMENTS INSPIRED BY NATURE” COLOURS

 <p><b>AIR</b> COLOURS INSPIRED BY</p>	 <p>White Dove A01</p>	 <p>Purity A02</p>	 <p>Serene Grey A07</p>	 <p>Naked Sauna A08</p>
 <p><b>EARTH</b> COLOURS INSPIRED BY</p>	 <p>Grounded E33</p>	 <p>Poppit Sands E35</p>	 <p>Acorn Drop E36</p>	 <p>Turning Leaf E37</p>
 <p><b>FIRE</b> COLOURS INSPIRED BY</p>	 <p>Volcanic Ash F62</p>	 <p>Amulet F63</p>	 <p>Sandy Lodge F65</p>	 <p>Burnt Pine F67</p>
 <p><b>WATER</b> COLOURS INSPIRED BY</p>	 <p>Glacier W93</p>	 <p>Beach Hut W92</p>	 <p>Blue Badis W96</p>	 <p>Palace Pier W97</p>

## OUR PRODUCTS

### > CLADDING

Cladding profiles  
Coloured cladding  
Accessories

### > FLOORING

Solid wood flooring  
Concept-Flooring  
Creativ-Flooring

### > COATING SYSTEMS

For the interior and exterior  
Wood protection and care

### > INTERIOR WOOD

Solid wood profiles  
Framing wood  
Laths

### > EDGE-GLUED PANELS

Solid wood panels  
Work surfaces  
Furniture doors

### > MOULDINGS

Skirting boards  
Mouldings for walls and ceilings  
Decorative mouldings

### > DECKING

Wood  
Ceramic  
BPC

### > SCREENS

Wood  
Sound protection  
Aluminium/BPC

## Osmo Holz und Color GmbH & Co. KG

Affhüppen Esch 12  
D-48231 Warendorf

Postfach 110161  
D-48203 Warendorf

Telefon +49 (0)2581/922-100  
Telefax +49 (0)2581/922-200

[www.osmo.com](http://www.osmo.com)

[info@osmo.de](mailto:info@osmo.de)

---

Your local Osmo dealer:

